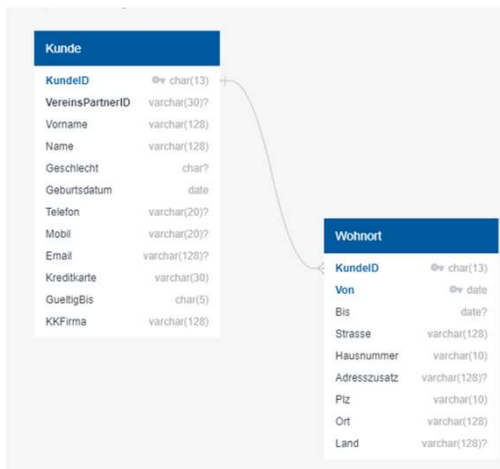


# Evaluation criterium 2: multi-active satellite



In this case, several valid rows are delivered for each customer, the multiactive-key is von. There is a standard-macro for multi-active Satellites in datavault4dbt.

```
multi_active_config:
  multi_active_key:
    - von
  main_hashkey_column: hk_customer_h
```

Each delivered set gets the same Hash\_Diff. That way a change in one entry leads to including the complete set new.

LDTS	ABC CUSTOMER_BK	VON	BIS	ABC STRASSE	ABC HAUSNUMMER	ABC HD_LIVINGADDRESS_WS_MS
2022-03-26 08:00:00.000	344	2008-04-27	2010-08-04	Niederseelbach	83	2211e62f74e463eb2dc97a1cbc047013
2022-03-26 08:00:00.000	344	2010-08-05	[NULL]	Köttenicher Straße	179	2211e62f74e463eb2dc97a1cbc047013
2022-03-19 08:00:00.000	344	1988-11-16	1992-08-25	Niederseelbach	83	135fb29e790e3ad67bb49f0d4e401d38
2022-03-19 08:00:00.000	344	1992-08-26	[NULL]	Köttenicher Straße	179	135fb29e790e3ad67bb49f0d4e401d38