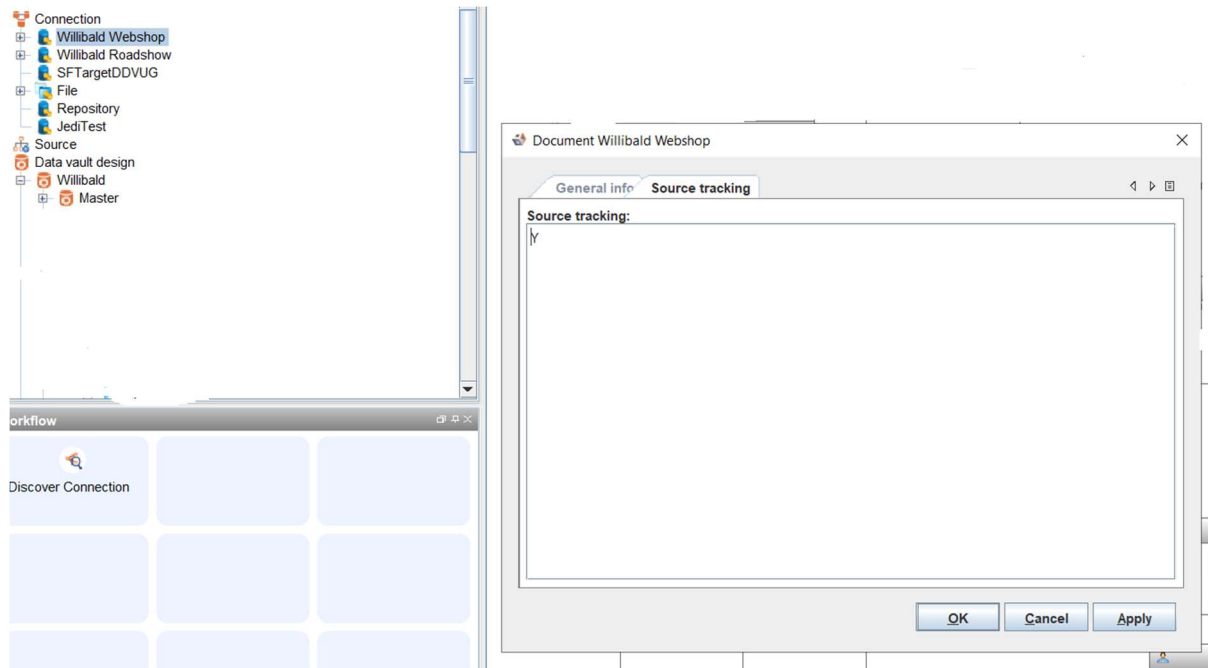


## 10. Deletion of Business Keys

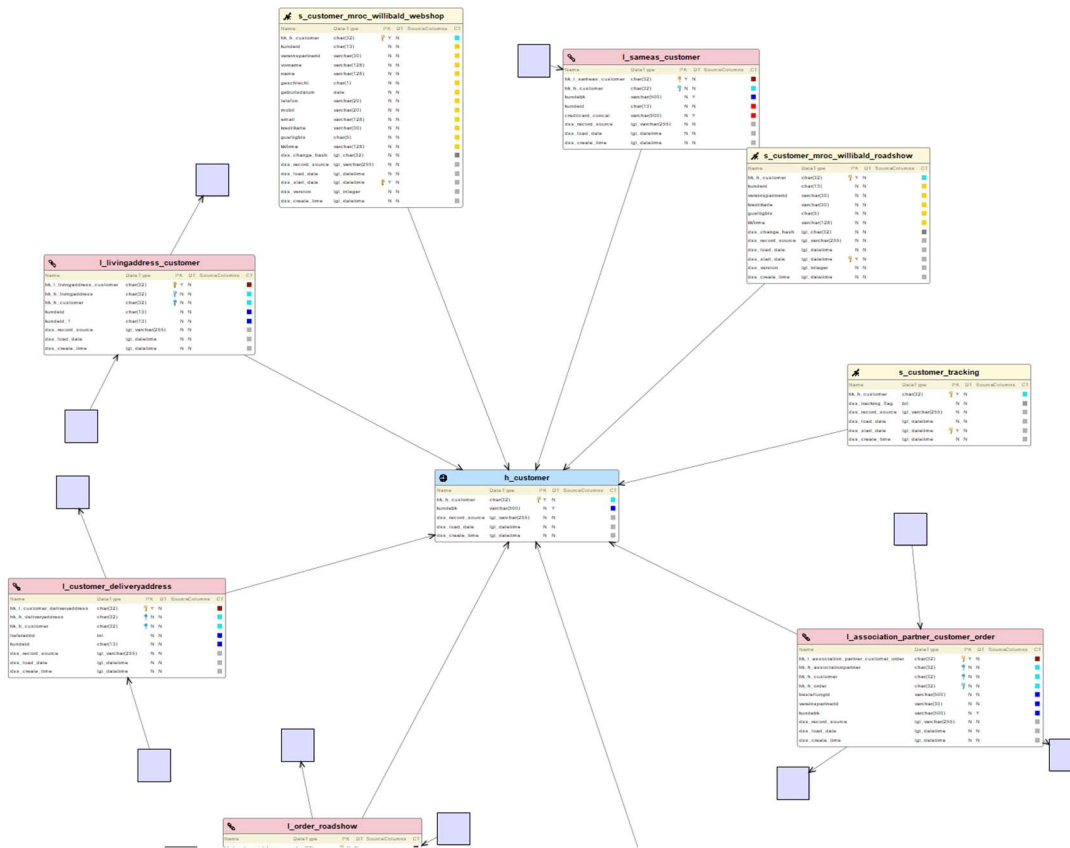
### Data Vault design

All connections which need source tracking must be configured for tracking and set as Y:



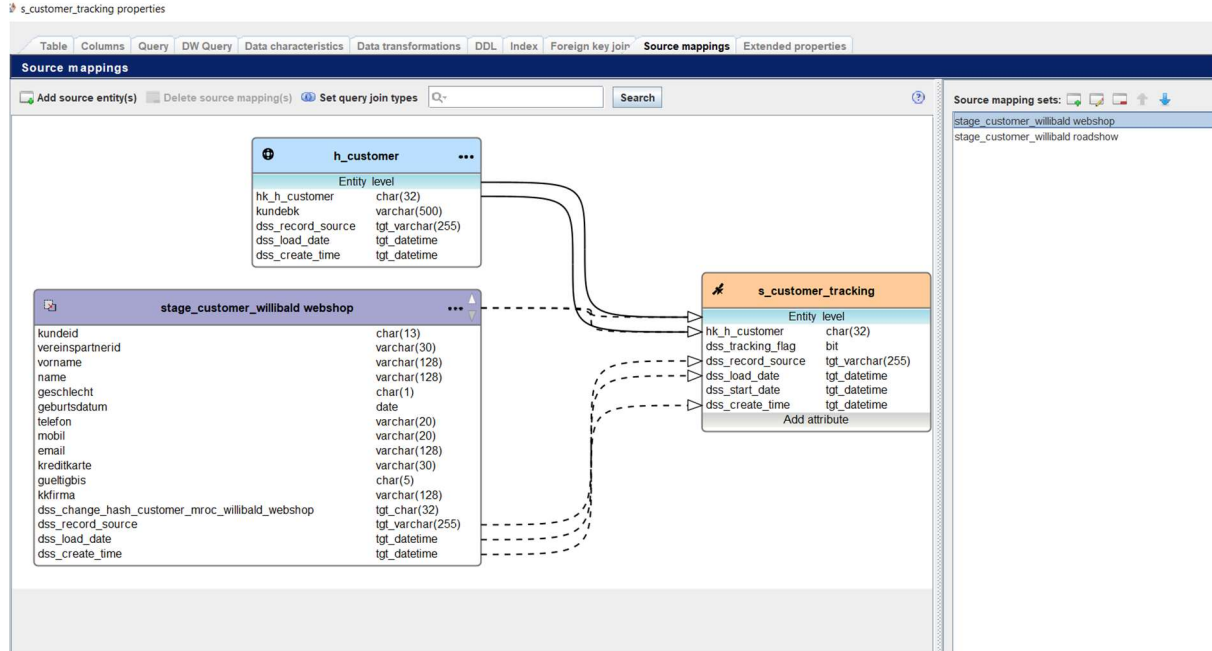
## Raw Vault generated automatically by 3D

Tracking satellites do not maintain dss\_change\_hash nor dss\_version columns. A new dss\_tracking\_flag attribute is added..



## Load and Staging generated automatically by 3D

The load and stage mechanism is the same as other satellites.



## dss\_tracking transformation logic:

The screenshot shows the configuration for the `dss_tracking` transformation. The source set is `stage_customer_willbald webshop`.

**Columns:**

- hk\_h\_customer
- dss\_tracking\_flag
- dss\_record\_source
- dss\_load\_date
- dss\_start\_date
- dss\_create\_time

**Change:** case when stage.hk\_h\_customer is null then 0 else 1 end

**Condition:**

**Encapsulate:**    Define as SELECT query

**Preview:**

```
1 SELECT case when stage.hk_h_customer is null then 0 else 1 end as "dss_tracking_flag"
2 FROM "s_customer_tracking"
```

